

STRUCTURES + HAYNES WHALEY, LLC

ABOUT THE FIRM

Structures + Haynes Whaley LLC is a strategic alliance created to provide high-quality structural engineering services to state agencies and institutions. Certified by the State of Texas as a Historically Underutilized Business, Structures + Haynes Whaley performs work on all types of facilities required by public entities.

Both Structures and Haynes Whaley Associates are noted for team player attitudes, a strong work ethic, and a high standard of client service. Each firm specializes in innovative designs for commercial, institutional, and governmental projects. Together, Structures + Haynes Whaley offers an optimum blend of talent, experience, and professional philosophies to projects in the public domain.

HISTORY: STRUCTURESPE, LTD.

After fourteen years of structural engineering experience, Jerry Garcia founded Structures in 1990. The firm specializes in site and master planning, new facility design, investigations and repair of existing facilities, and historic preservation. Structures' capacity to produce sophisticated solutions and respond to unique structural challenges has earned the firm recognition and respect in the construction industry.

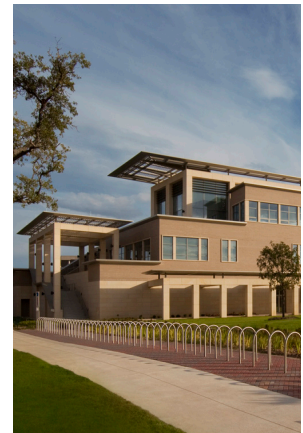
HISTORY: HAYNES WHALEY ASSOCIATES, INC.

Founded in Houston in 1976, and with offices in Reston, Virginia and Austin, Texas, Haynes Whaley Associates offers structural engineering services for a broad range of commercial, public, and institutional projects. The firm works nationally, with projects in 40 states, the District of Columbia, and the Caribbean.

CREATIVE, COMPLETE, COORDINATED, CONSTRUCTIBLE, COST-EFFICIENT

These are the qualities that Structures + Haynes Whaley bring to each project:

- **CREATIVE.** Our creativity consistently produces structural systems that integrate well with the architecture and other building systems. We take great pride in developing practical solutions to complex problems—our reputation is built on a “can do” spirit that drives us to meet each building challenge with inventive designs.
- **COMPLETE.** We are recognized throughout the real estate, design, and construction industries for thorough design and documentation production.
- **COORDINATED.** We are adept at coordinating our work with multiple disciplines to produce accurate documents and meet demanding schedules. Multiple, ongoing, successful collaborations with owners, architects, and contractors nationwide attest to our skills in this area.
- **CONSTRUCTIBLE.** Our nuts-and-bolts common sense project approach Ensures that our designs are truly buildable.
- **COST-EFFICIENT.** We design cost-efficient, trouble-free buildings. Our superior quality documents are thoroughly detailed, well coordinated, and accurate. Our goal on every project is to optimize structural systems that meet or surpass budget and serviceability expectations.



Texas A&M University
Interdisciplinary Life Sciences



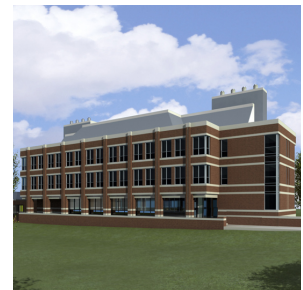
Baylor College of Medicine Clinic
& Hospital Campus



U of H Science, Engineering &
Classroom Building



UT SW Medical Center Clean
Rodent Housing/BSL-3 Lab



Texas A&M University - Texarkana
Science & Technology Building